

Quadra St between McKenzie Ave and Reynolds Rd

October 21, 2019 To October 25, 2019



The data presented here is for information purposes only and should not be considered authoritative for construction, geotechnical, engineering, navigational, legal, or other site-specific uses. The information shared is owned by the Transportation Division of the Engineering Department at the District of Saanich. Accuracy is not guaranteed.

Start Date: 21-Oct-19
 Start Time: 0:00
 Station ID: M0027-06

Location 1: Quadra St between McKenzie Ave and Reynolds Rd

Note:

DATE:	October 21, 2019		October 22, 2019		October 23, 2019		October 24, 2019		October 25, 2019		WK AVG		WK AVG	HOURLY
	MON		TUE		WED		THURS		FRI		NB	SB	CH 1+2	%
Time:	NB	SB	NB	SB	NB	SB	NB	SB	NB	SB	NB	SB		
12-1 AM			27	40	31	37	33	47			30	41	72	0.4%
1-2 AM			8	18	22	24	20	19			17	20	37	0.2%
2-3 AM			12	16	10	7	7	7			10	10	20	0.1%
3-4 AM			15	18	10	8	6	11			10	12	23	0.1%
4-5 AM			18	29	18	30	15	22			17	27	44	0.2%
5-6 AM			53	55	50	63	45	58			49	59	108	0.6%
6-7 AM			171	164	164	168	162	186			166	173	338	1.8%
7-8 AM			479	458	489	482	510	448			493	463	955	5.2%
8-9 AM			754	636	767	672	746	650			756	653	1408	7.7%
9-10 AM			541	592	587	599	518	574			549	588	1137	6.2%
10-11 AM			513	544	489	537	558	592			520	558	1078	5.9%
11-12 PM			545	593	595	584	608	589			583	589	1171	6.4%
12-1 PM			583	611	650	590	616	575			616	592	1208	6.6%
1-2 PM			580	596	602	614	585	576			589	595	1184	6.5%
2-3 PM			685	664	681	651	645	625			670	647	1317	7.2%
3-4 PM			831	715	822	695	770	732			808	714	1522	8.3%
4-5 PM			908	758	866	740	904	750			893	749	1642	9.0%
5-6 PM			907	716	840	698	837	723			861	712	1574	8.6%
6-7 PM			554	535	570	549	541	502			555	529	1084	5.9%
7-8 PM			381	411	407	428	395	429			394	423	817	4.5%
8-9 PM			264	323	299	297	337	307			300	309	609	3.3%
9-10 PM			216	233	277	291	261	254			251	259	511	2.8%
10-11 PM			118	144	131	145	132	159			127	149	276	1.5%
11-12 AM			70	82	87	88	73	96			77	89	165	0.9%
LANES			9233	8951	9464	8997	9324	8931			9340	8960	18300	100.0%
TOTAL			18184		18461		18255				18300			
	MON		TUE		WED		THURS		FRI		WK AVG			

PEAK HOUR					TOTAL VEHICALS-PEAK PERIODS		2 HOUR PEAK INTERVALS							
MAX. 7 - 9 am PEAK HOUR	1408	⇒	7.7%	between 8-9 AM	7959	⇒	6 HR TOTAL	2 HR AM (7 - 9 AM)						
MAX. 7 - 11 am PEAK HOUR	1408	⇒	7.7%	between 8-9 AM	5579	⇒	4 HR TOTAL	VEH / HR	VEH / 2HR	2 HR %				
								7-8 AM	955	2364	12.9%			
								8-9 AM	1408					
MAX. 11 am - 1 pm PEAK HOUR	1208	⇒	6.6%	between 12-1 PM			24 HOUR FACTORS	2 HR NOON (11 - 1 PM)						
MAX. 11 am - 3 pm PEAK HOUR	1317	⇒	7.2%	between 2-3 PM				VEH / HR	VEH / 2HR	2 HR %				
								11-12 PM	1171	2380	13.0%			
MAX. 4 - 6 pm PEAK HOUR	1642	⇒	9.0%	between 4-5 PM	2.30	⇒	6-24 HR FACT.	12-1 PM	1208					
MAX. 3 - 6 pm PEAK HOUR	1642	⇒	9.0%	between 4-5 PM	3.28	⇒	4-24 HR FACT.	2 HR PM (4 - 6 PM)						
								VEH / HR	VEH / 2HR	2 HR %				
								4-5 PM	1642	3216	17.6%			
								5-6 PM	1574					

Quadra St between McKenzie Ave and Reynolds Rd

Northbound

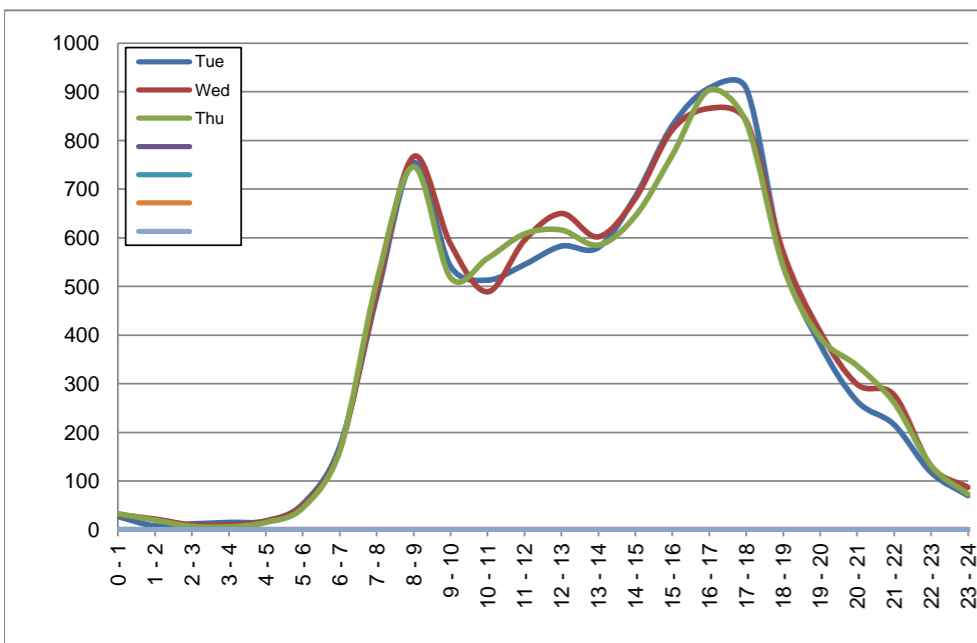
October 22, 2019 to October 24, 2019

Hourly Volumes

Time Period	Tue	Wed	Thu				
	Oct 22	Oct 23	Oct 24				
0 - 1	27	31	33				
1 - 2	8	22	20				
2 - 3	12	10	7				
3 - 4	15	10	6				
4 - 5	18	18	15				
5 - 6	53	50	45				
6 - 7	171	164	162				
7 - 8	479	489	510				
8 - 9	754	767	746				
9 - 10	541	587	518				
10 - 11	513	489	558				
11 - 12	545	595	608				
12 - 13	583	650	616				
13 - 14	580	602	585				
14 - 15	685	681	645				
15 - 16	831	822	770				
16 - 17	908	866	904				
17 - 18	907	840	837				
18 - 19	554	570	541				
19 - 20	381	407	395				
20 - 21	264	299	337				
21 - 22	216	277	261				
22 - 23	118	131	132				
23 - 24	70	87	73				
Day Total	9233	9464	9324				

15-Minute Volumes

Time Start	Tue	Wed	Thu				
	Oct 22	Oct 23	Oct 24				
0:00	12	8	16				
0:15	8	10	5				
0:30	6	9	7				
0:45	1	4	5				
1:00	3	6	9				
1:15	2	5	2				
1:30	1	6	3				
1:45	2	5	6				
2:00	5	2	3				
2:15	3	4	1				
2:30	3	2	2				
2:45	1	2	1				
3:00	3	5	1				
3:15	2	2	0				
3:30	3	0	3				
3:45	7	3	2				
4:00	6	2	3				
4:15	3	5	5				
4:30	3	4	2				
4:45	6	7	5				
5:00	9	11	10				
5:15	10	5	8				
5:30	17	18	10				
5:45	17	16	17				
6:00	30	24	30				
6:15	32	36	22				
6:30	58	45	46				
6:45	51	59	64				
7:00	64	74	80				
7:15	110	111	89				
7:30	142	132	139				
7:45	163	172	202				
8:00	188	203	182				
8:15	223	220	219				
8:30	170	173	177				
8:45	173	171	168				
9:00	148	166	127				
9:15	125	128	155				
9:30	132	144	103				
9:45	136	149	133				
10:00	138	113	164				
10:15	121	120	145				
10:30	129	120	121				
10:45	125	136	128				
11:00	121	131	156				
11:15	123	168	147				
11:30	159	147	151				
11:45	142	149	154				
12:00	143	178	166				
12:15	143	176	150				
12:30	133	141	156				
12:45	164	155	144				
13:00	135	139	126				
13:15	132	168	180				
13:30	153	126	131				
13:45	160	169	148				
14:00	161	167	139				
14:15	160	166	141				
14:30	163	174	197				
14:45	201	174	168				
15:00	186	189	188				
15:15	199	210	201				
15:30	226	212	188				
15:45	220	211	193				
16:00	219	200	215				
16:15	231	212	206				
16:30	223	229	252				
16:45	235	225	231				
17:00	259	245	253				
17:15	233	237	233				
17:30	235	198	186				
17:45	180	160	165				
18:00	161	166	147				
18:15	151	162	136				
18:30	129	121	138				
18:45	113	121	120				
19:00	116	131	108				
19:15	95	112	97				
19:30	80	86	102				
19:45	90	78	88				
20:00	75	65	111				
20:15	79	96	86				
20:30	67	71	54				
20:45	43	67	86				
21:00	78	75	71				
21:15	57	65	70				
21:30	44	86	65				
21:45	37	51	55				
22:00	38	36	44				
22:15	33	35	32				
22:30	28	28	34				
22:45	19	32	22				
23:00	25	41	18				
23:15	19	21	26				
23:30	15	12	16				
23:45	11	13	13				



Site notes:

Quadra St between McKenzie Ave and Reynolds Rd

Southbound

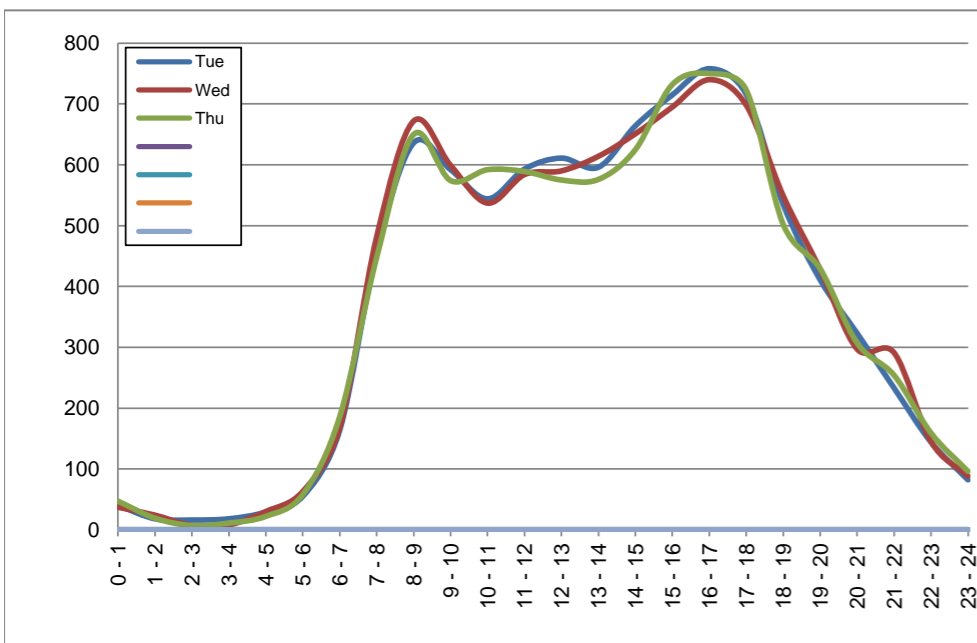
October 22, 2019 to October 24, 2019

Hourly Volumes

Time Period	Tue	Wed	Thu				
	Oct 22	Oct 23	Oct 24				
0 - 1	40	37	47				
1 - 2	18	24	19				
2 - 3	16	7	7				
3 - 4	18	8	11				
4 - 5	29	30	22				
5 - 6	55	63	58				
6 - 7	164	168	186				
7 - 8	458	482	448				
8 - 9	636	672	650				
9 - 10	592	599	574				
10 - 11	544	537	592				
11 - 12	593	584	589				
12 - 13	611	590	575				
13 - 14	596	614	576				
14 - 15	664	651	625				
15 - 16	715	695	732				
16 - 17	758	740	750				
17 - 18	716	698	723				
18 - 19	535	549	502				
19 - 20	411	428	429				
20 - 21	323	297	307				
21 - 22	233	291	254				
22 - 23	144	145	159				
23 - 24	82	88	96				
Day Total	8951	8997	8931				

15-Minute Volumes

Time Start	Tue	Wed	Thu				
	Oct 22	Oct 23	Oct 24				
0:00	16	12	18				
0:15	11	9	10				
0:30	7	13	8				
0:45	6	3	11				
1:00	4	8	6				
1:15	8	6	5				
1:30	3	4	4				
1:45	3	6	4				
2:00	2	0	6				
2:15	3	3	1				
2:30	9	2	0				
2:45	2	2	0				
3:00	3	2	0				
3:15	4	3	2				
3:30	5	2	6				
3:45	6	1	3				
4:00	7	8	5				
4:15	4	8	5				
4:30	9	9	2				
4:45	9	5	10				
5:00	7	6	8				
5:15	11	19	11				
5:30	19	19	20				
5:45	18	19	19				
6:00	30	29	23				
6:15	39	41	48				
6:30	49	53	64				
6:45	46	45	51				
7:00	85	92	71				
7:15	97	94	95				
7:30	121	141	118				
7:45	155	155	164				
8:00	140	170	159				
8:15	172	160	165				
8:30	158	177	170				
8:45	166	165	156				
9:00	161	161	163				
9:15	143	151	145				
9:30	139	146	124				
9:45	149	141	142				
10:00	144	122	154				
10:15	130	149	142				
10:30	132	121	151				
10:45	138	145	145				
11:00	139	126	144				
11:15	150	147	140				
11:30	145	164	159				
11:45	159	147	146				
12:00	141	179	156				
12:15	152	146	150				
12:30	150	121	157				
12:45	168	144	112				
13:00	153	162	145				
13:15	142	152	154				
13:30	147	149	138				
13:45	154	151	139				
14:00	143	170	154				
14:15	169	172	162				
14:30	160	141	150				
14:45	192	168	159				
15:00	175	157	181				
15:15	170	184	182				
15:30	197	181	187				
15:45	173	173	182				
16:00	194	159	193				
16:15	188	197	188				
16:30	186	196	193				
16:45	190	188	176				
17:00	205	185	226				
17:15	176	207	188				
17:30	170	156	155				
17:45	165	150	154				
18:00	145	161	147				
18:15	133	149	130				
18:30	143	132	111				
18:45	114	107	114				
19:00	118	120	122				
19:15	96	110	102				
19:30	96	111	97				
19:45	101	87	108				
20:00	84	72	75				
20:15	75	81	76				
20:30	75	82	75				
20:45	89	62	81				
21:00	68	83	68				
21:15	68	70	79				
21:30	51	82	64				
21:45	46	56	43				
22:00	39	41	47				
22:15	56	39	36				
22:30	23	33	52				
22:45	26	32	24				
23:00	28	35	31				
23:15	19	27	20				
23:30	19	13	25				
23:45	16	13	20				



Site notes:

Vehicle Speed Summary

Saanich Engineering Department

Count Id: [M0027-06](#)

Filename: [Quadra St between McKenzie Ave and Reynolds Rd-Oct-2019.xlsm](#)

Location: Quadra St between McKenzie Ave and Reynolds Rd

Note:

Direction: **North-South**

Dates: **October 21, 2019 To October 25, 2019**

Filtered data

AVG. SPEED	28 mph	45 km/h
50 % SPEED	28 mph	46 km/h
85 % SPEED	33 mph	54 km/h
95 % SPEED	37 mph	59 km/h

Location Map



Quadra St between McKenzie Ave and Reynolds Rd

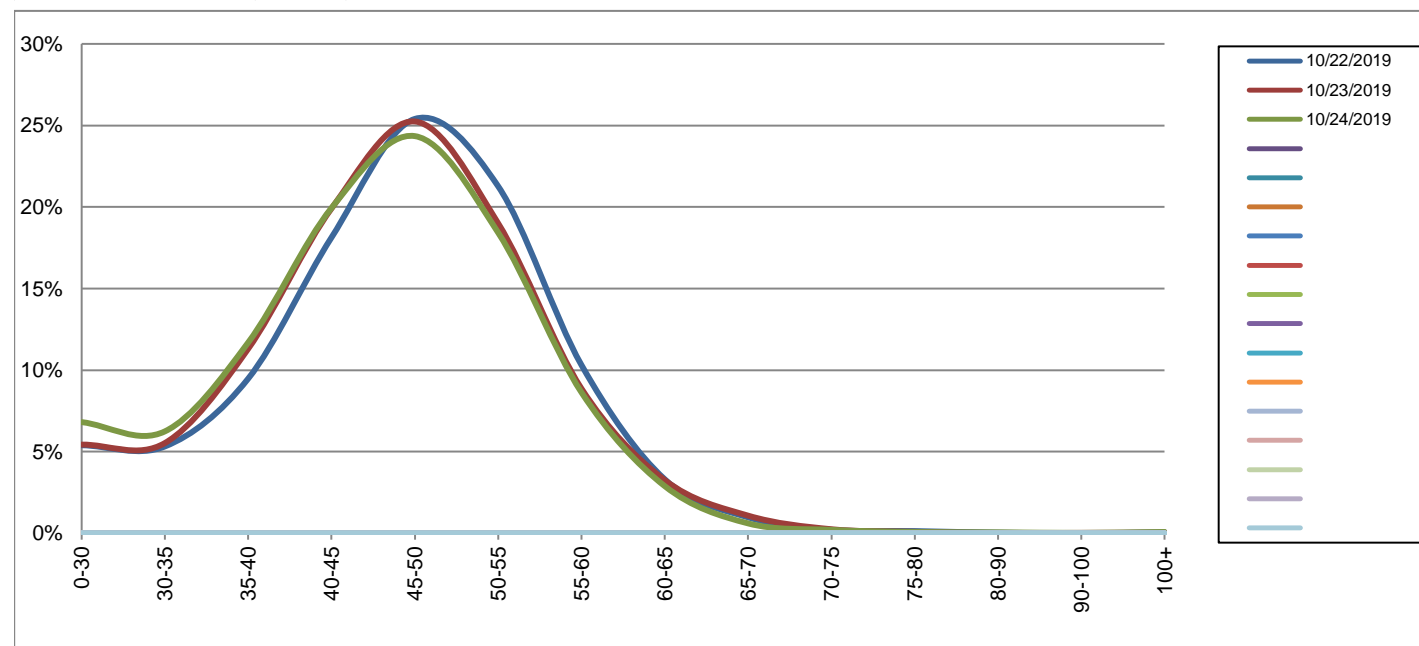
Northbound

October 22, 2019 to October 24, 2019

Daily Speed Bin Percentages															Daily Speed Bin Volumes														Total	Avg.
Bin #	1	2	3	4	5	6	7	8	9	10	11	12	13	14	1	2	3	4	5	6	7	8	9	10	11	12	13	14	Volume	Speed
Bin Speeds	0-30	30-35	35-40	40-45	45-50	50-55	55-60	60-65	65-70	70-75	75-80	80-90	90-100	100+	0-30	30-35	35-40	40-45	45-50	50-55	55-60	60-65	65-70	70-75	75-80	80-90	90-100	100+		
10/22/2019	5.4%	5.3%	9.5%	18.1%	25.4%	21.3%	10.3%	3.3%	1.0%	0.2%	0.1%	0.0%	0.0%	0.1%	498	491	875	1674	2345	1964	952	305	90	19	12	3	0	5	9233	46
10/23/2019	5.4%	5.5%	11.3%	19.9%	25.2%	19.0%	8.9%	3.3%	1.1%	0.2%	0.1%	0.0%	0.0%	0.0%	514	523	1070	1884	2389	1798	839	308	102	23	8	1	2	3	9464	45
10/24/2019	6.8%	6.2%	11.7%	19.9%	24.3%	18.4%	8.6%	2.9%	0.6%	0.2%	0.1%	0.1%	0.0%	0.1%	635	582	1090	1859	2270	1718	805	269	56	19	7	5	2	7	9324	45
Total	5.9%	5.7%	10.8%	19.3%	25.0%	19.6%	9.3%	3.1%	0.9%	0.2%	0.1%	0.0%	0.0%	0.1%	1647	1596	3035	5417	7004	5480	2596	882	248	61	27	9	4	15	28021	45

Speed Data Summary

Bin #	1	2	3	4	5	6	7	8	9	10	11	12	13	14	Total
Bin Speeds	0-30	30-35	35-40	40-45	45-50	50-55	55-60	60-65	65-70	70-75	75-80	80-90	90-100	100+	
Survey Total	1647	1596	3035	5417	7004	5480	2596	882	248	61	27	9	4	15	28021
% Total	5.9%	5.7%	10.8%	19.3%	25.0%	19.6%	9.3%	3.1%	0.9%	0.2%	0.1%	0.0%	0.0%	0.1%	100%
Accumulated %	5.9%	11.6%	22.4%	41.7%	66.7%	86.3%	95.6%	98.7%	99.6%	99.8%	99.9%	99.9%	99.9%	100%	
Inverse Accum. %	94.1%	88.4%	77.6%	58.3%	33.3%	13.7%	4.4%	1.3%	0.4%	0.2%	0.1%	0.1%	0.1%	0.0%	
Average Speed	45 KM/H														



Site notes:

Quadra St between McKenzie Ave and Reynolds Rd

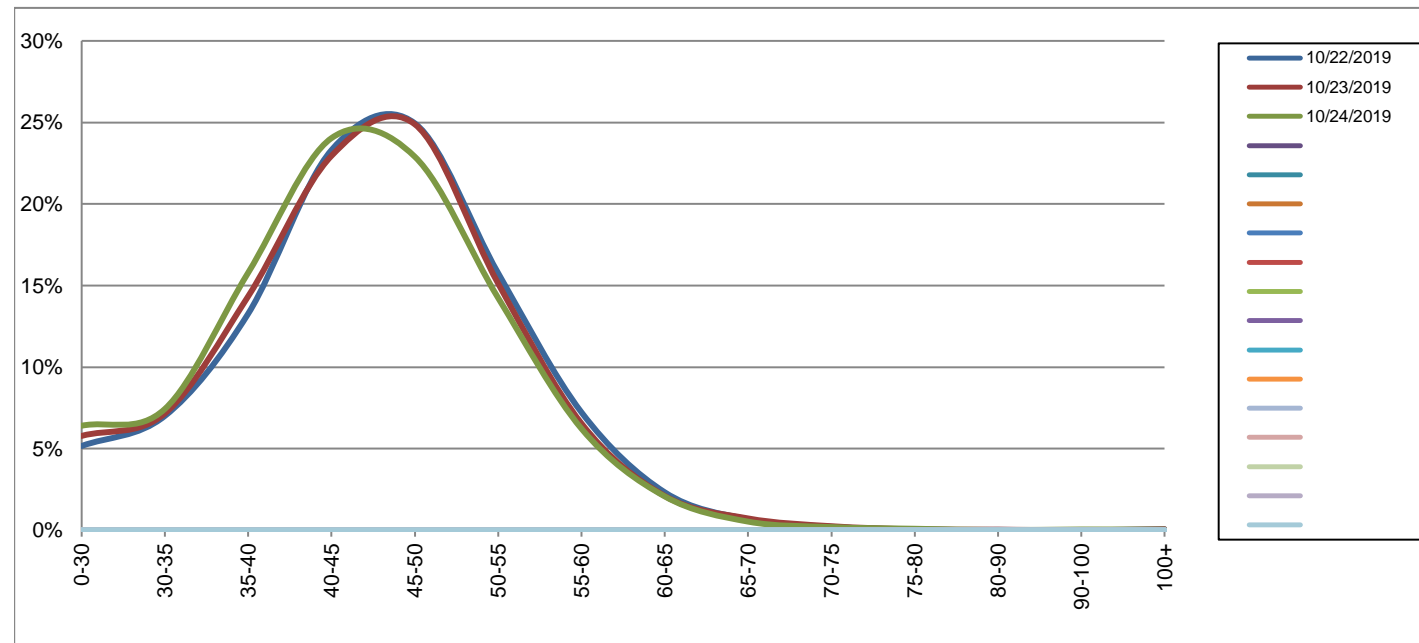
Southbound

October 22, 2019 to October 24, 2019

Daily Speed Bin Percentages															Daily Speed Bin Volumes														Total	Avg.
Bin #	1	2	3	4	5	6	7	8	9	10	11	12	13	14	1	2	3	4	5	6	7	8	9	10	11	12	13	14	Volume	Speed
Bin Speeds	0-30	30-35	35-40	40-45	45-50	50-55	55-60	60-65	65-70	70-75	75-80	80-90	90-100	100+	0-30	30-35	35-40	40-45	45-50	50-55	55-60	60-65	65-70	70-75	75-80	80-90	90-100	100+		
10/22/2019	5.2%	7.0%	13.3%	23.3%	24.9%	15.8%	7.2%	2.3%	0.7%	0.2%	0.0%	0.0%	0.0%	0.1%	462	627	1188	2086	2233	1411	647	208	60	19	3	2	0	5	8951	44
10/23/2019	5.8%	7.2%	14.3%	23.0%	24.9%	15.1%	6.5%	2.1%	0.7%	0.2%	0.1%	0.0%	0.0%	0.1%	520	644	1290	2065	2239	1361	589	189	65	22	5	3	0	5	8997	44
10/24/2019	6.4%	7.4%	15.8%	24.0%	22.9%	14.2%	6.2%	2.1%	0.5%	0.2%	0.1%	0.0%	0.0%	0.0%	572	664	1410	2147	2045	1272	556	185	47	17	8	1	4	3	8931	43
Total	5.8%	7.2%	14.5%	23.4%	24.2%	15.0%	6.7%	2.2%	0.6%	0.2%	0.1%	0.0%	0.0%	0.0%	1554	1935	3888	6298	6517	4044	1792	582	172	58	16	6	4	13	26879	44

Speed Data Summary

Bin #	1	2	3	4	5	6	7	8	9	10	11	12	13	14	Total
Bin Speeds	0-30	30-35	35-40	40-45	45-50	50-55	55-60	60-65	65-70	70-75	75-80	80-90	90-100	100+	
Survey Total	1554	1935	3888	6298	6517	4044	1792	582	172	58	16	6	4	13	26879
% Total	5.8%	7.2%	14.5%	23.4%	24.2%	15.0%	6.7%	2.2%	0.6%	0.2%	0.1%	0.0%	0.0%	0.0%	100%
Accumulated %	5.8%	13.0%	27.4%	50.9%	75.1%	90.2%	96.8%	99.0%	99.6%	99.9%	99.9%	99.9%	100.0%	100%	
Inverse Accum. %	94.2%	87.0%	72.6%	49.1%	24.9%	9.8%	3.2%	1.0%	0.4%	0.1%	0.1%	0.1%	0.0%	0.0%	
Average Speed	44 KM/H														



Site notes:

Quadra St between McKenzie Ave and Reynolds Rd

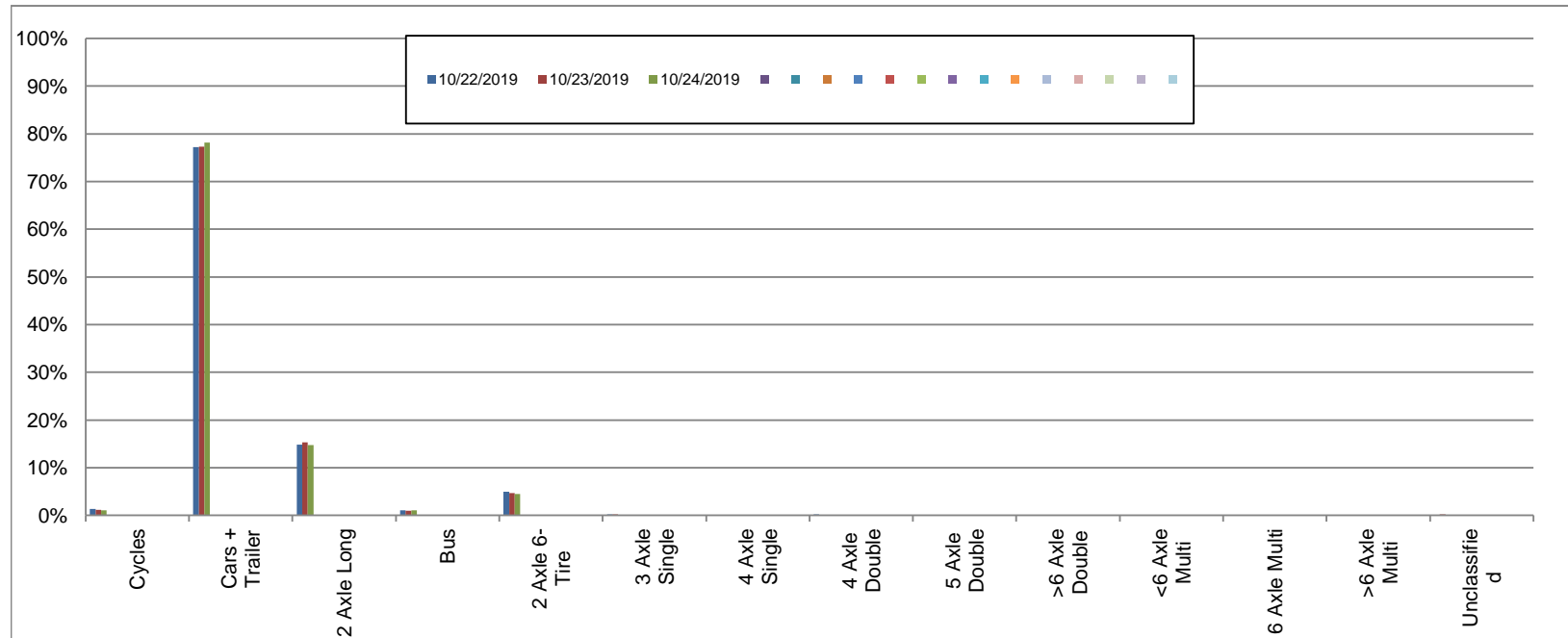
Northbound

October 22, 2019 to October 24, 2019

Daily Class Bin Percentages															Daily Class Bin Volumes														
Bin #	1	2	3	4	5	6	7	8	9	10	11	12	13	14	1	2	3	4	5	6	7	8	9	10	11	12	13	14	Total Volume
Bin Class	Cycles	Cars + Trailer	2 Axle Long	Bus	2 Axle 6-Tire	3 Axle Single	4 Axle Single	4 Axle Double	5 Axle Double	>6 Axle Double	<6 Axle Multi	6 Axle Multi	>6 Axle Multi	Unclassified	Cycles	Cars + Trailer	2 Axle Long	Bus	2 Axle 6-Tire	3 Axle Single	4 Axle Single	4 Axle Double	5 Axle Double	>6 Axle Double	<6 Axle Multi	6 Axle Multi	>6 Axle Multi	Unclassified	
10/22/2019	1.3%	77.2%	14.8%	1.1%	5.0%	0.2%	0.0%	0.2%	0.1%	0.0%	0.0%	0.0%	0.0%	0.1%	122	7126	1371	98	459	20	0	20	6	2	0	0	2	7	9233
10/23/2019	1.1%	77.4%	15.3%	1.0%	4.7%	0.2%	0.0%	0.1%	0.1%	0.0%	0.0%	0.0%	0.0%	0.2%	108	7321	1448	91	446	19	1	8	5	2	0	0	0	15	9464
10/24/2019	1.1%	78.2%	14.8%	1.0%	4.5%	0.1%	0.0%	0.1%	0.0%	0.0%	0.0%	0.0%	0.0%	0.1%	103	7291	1376	96	416	13	1	10	3	1	0	0	1	13	9324
Total	1.2%	77.6%	15.0%	1.0%	4.7%	0.2%	0.0%	0.1%	0.0%	0.0%	0.0%	0.0%	0.0%	0.1%	333	21738	4195	285	1321	52	2	38	14	5	0	0	3	35	28021

Class Data Summary

Bin #	1	2	3	4	5	6	7	8	9	10	11	12	13	14	Total Volume
Bin Class	Cycles	Cars + Trailer	2 Axle Long	Bus	2 Axle 6-Tire	3 Axle Single	4 Axle Single	4 Axle Double	5 Axle Double	>6 Axle Double	<6 Axle Multi	6 Axle Multi	>6 Axle Multi	Unclassified	Total Volume
Survey Total	333	21738	4195	285	1321	52	2	38	14	5	0	0	3	35	28021
% Total	1.2%	77.6%	15.0%	1.0%	4.7%	0.2%	0.0%	0.1%	0.0%	0.0%	0.0%	0.0%	0.0%	0.1%	100%
Accumulated %	1.2%	78.8%	93.7%	94.8%	99.5%	99.7%	99.7%	99.8%	99.8%	99.9%	99.9%	99.9%	99.9%	100.0%	
Inv. Accum. %	98.8%	21.2%	6.3%	5.2%	0.5%	0.3%	0.3%	0.2%	0.2%	0.1%	0.1%	0.1%	0.1%	0.0%	



Classification Descriptions

Bin #	Bin Description
1	Motorcycles
2	Passenger cars, including those with recreational trailers
3	2-axle pick-ups, vans, and RVs, including those with recreational trailers
4	Buses
5	2-axle, 6-tire single units
6	3-axle single units
7	4-axle single units
8	3-axle or 4-axle double unit
9	5-axle double unit
10	6-, 7-, or 8-axle double unit
11	5-axle multiple unit
12	6-axle multiple unit
13	7-or-more-axle multiple unit
14	Vehicles that could not be classified

Site notes:

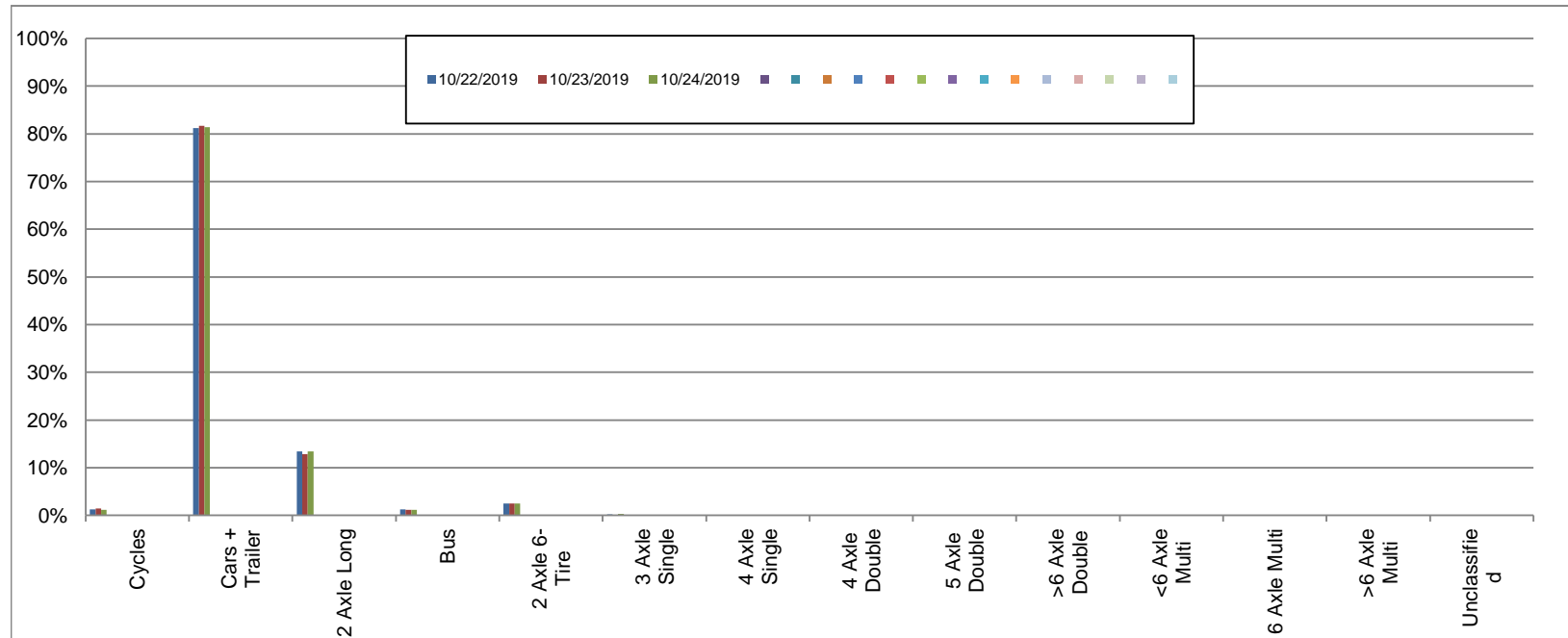
Quadra St between McKenzie Ave and Reynolds Rd

Southbound
October 22, 2019 to October 24, 2019

Daily Class Bin Percentages															Daily Class Bin Volumes														
Bin #	1	2	3	4	5	6	7	8	9	10	11	12	13	14	1	2	3	4	5	6	7	8	9	10	11	12	13	14	Total Volume
Bin Class	Cycles	Cars + Trailer	2 Axle Long	Bus	2 Axle 6-Tire	3 Axle Single	4 Axle Single	4 Axle Double	5 Axle Double	>6 Axle Double	<6 Axle Multi	6 Axle Multi	>6 Axle Multi	Unclassified	Cycles	Cars + Trailer	2 Axle Long	Bus	2 Axle 6-Tire	3 Axle Single	4 Axle Single	4 Axle Double	5 Axle Double	>6 Axle Double	<6 Axle Multi	6 Axle Multi	>6 Axle Multi	Unclassified	
10/22/2019	1.2%	81.2%	13.4%	1.2%	2.5%	0.2%	0.0%	0.1%	0.0%	0.0%	0.0%	0.0%	0.0%	0.1%	110	7268	1197	108	225	18	0	11	1	0	0	0	0	13	8951
10/23/2019	1.4%	81.7%	12.9%	1.2%	2.5%	0.1%	0.0%	0.1%	0.0%	0.0%	0.0%	0.0%	0.0%	0.1%	126	7350	1157	104	227	12	0	12	4	0	0	0	0	5	8997
10/24/2019	1.1%	81.4%	13.4%	1.1%	2.5%	0.3%	0.0%	0.1%	0.0%	0.0%	0.0%	0.0%	0.0%	0.1%	100	7271	1193	102	220	25	0	13	1	0	0	0	0	6	8931
Total	1.3%	81.4%	13.2%	1.2%	2.5%	0.2%	0.0%	0.1%	0.0%	0.0%	0.0%	0.0%	0.0%	0.1%	336	21889	3547	314	672	55	0	36	6	0	0	0	0	24	26879

Class Data Summary

Bin #	1	2	3	4	5	6	7	8	9	10	11	12	13	14	Total Volume
Bin Class	Cycles	Cars + Trailer	2 Axle Long	Bus	2 Axle 6-Tire	3 Axle Single	4 Axle Single	4 Axle Double	5 Axle Double	>6 Axle Double	<6 Axle Multi	6 Axle Multi	>6 Axle Multi	Unclassified	Total Volume
Survey Total	336	21889	3547	314	672	55	0	36	6	0	0	0	0	24	26879
% Total	1.3%	81.4%	13.2%	1.2%	2.5%	0.2%	0.0%	0.1%	0.0%	0.0%	0.0%	0.0%	0.0%	0.1%	100%
Accumulated %	1.3%	82.7%	95.9%	97.0%	99.5%	99.8%	99.8%	99.9%	99.9%	99.9%	99.9%	99.9%	100.0%		
Inv. Accum. %	98.7%	17.3%	4.1%	3.0%	0.5%	0.2%	0.2%	0.1%	0.1%	0.1%	0.1%	0.1%	0.0%		



Classification Descriptions

Bin #	Bin Description
1	Motorcycles
2	Passenger cars, including those with recreational trailers
3	2-axle pick-ups, vans, and RVs, including those with recreational trailers
4	Buses
5	2-axle, 6-tire single units
6	3-axle single units
7	4-axle single units
8	3-axle or 4-axle double unit
9	5-axle double unit
10	6-, 7-, or 8-axle double unit
11	5-axle multiple unit
12	6-axle multiple unit
13	7-or-more-axle multiple unit
14	Vehicles that could not be classified

Site notes: